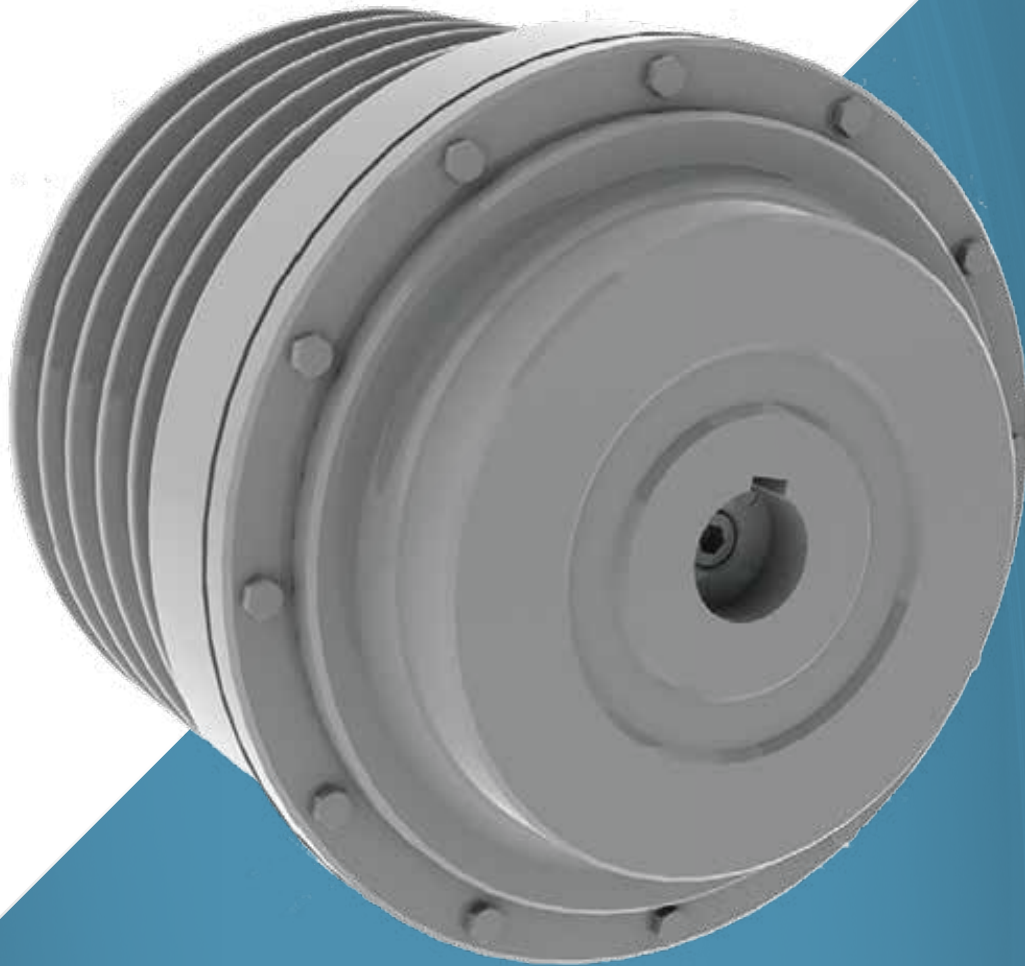




Battioni®
Pagani

Technical data sheet

PULLEY WITH PNEUMATIC CLUTCH



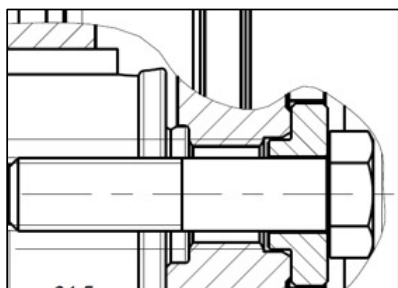
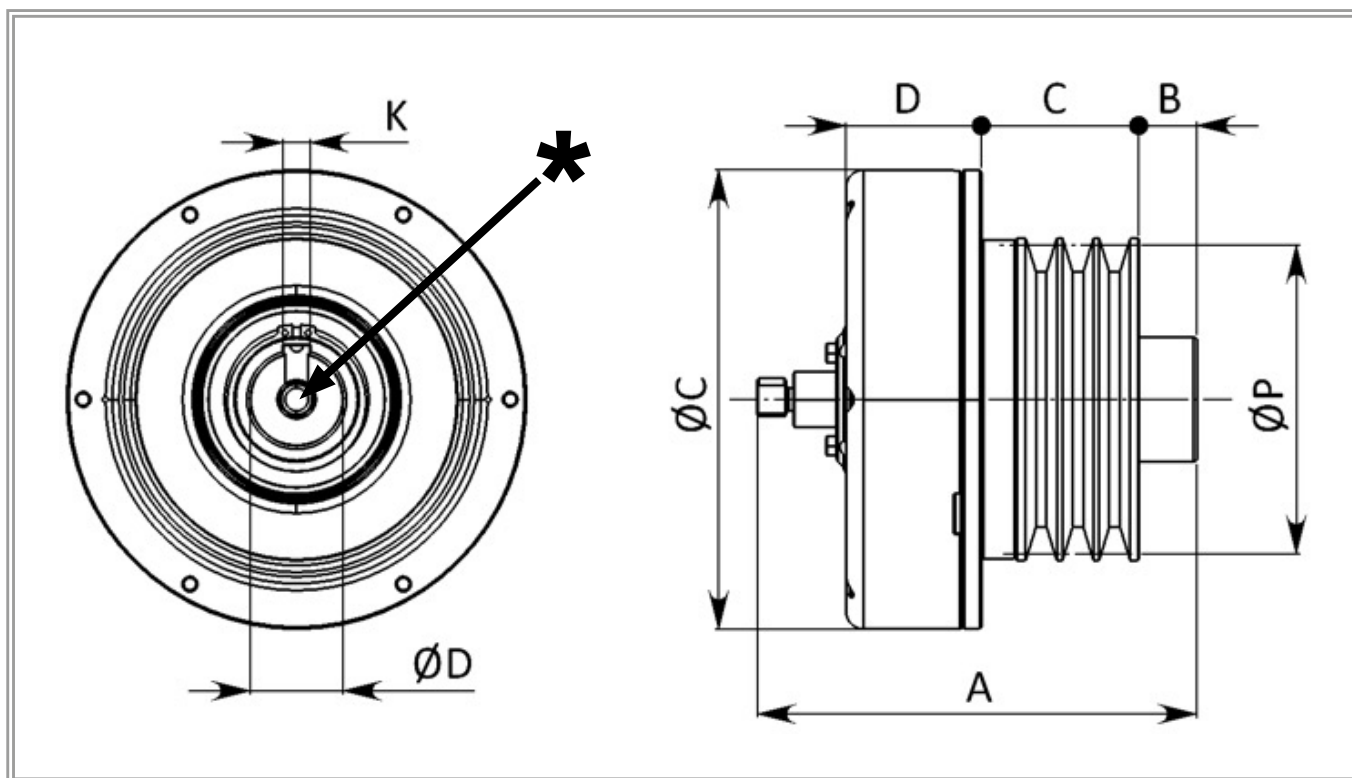
Original Instruction



DESCRIPTIONS AND TECHNICAL DATA

The Battioni Pagani pulley& clutch is an actuated clutch assembly with dimensional characteristics and with performances particularly suitable to operate the engagement and disengagement of vacuum pumps, blowers, high- pressure piston water pumps and centrifuges, installed above the frame of vehicle, where the pump drive and or blower is done by means of a belts transmission. The use of Battioni Pagani clutches on combined vehicles for the purging of cesspools and washing of channels allows to engage and disengage vacuum and water pumps without having to stop the rotation of the transmission that carries the motion to the entry pulley of the clutch; thus ensuring extremely simple use for the operator and a reduction of passive in time.

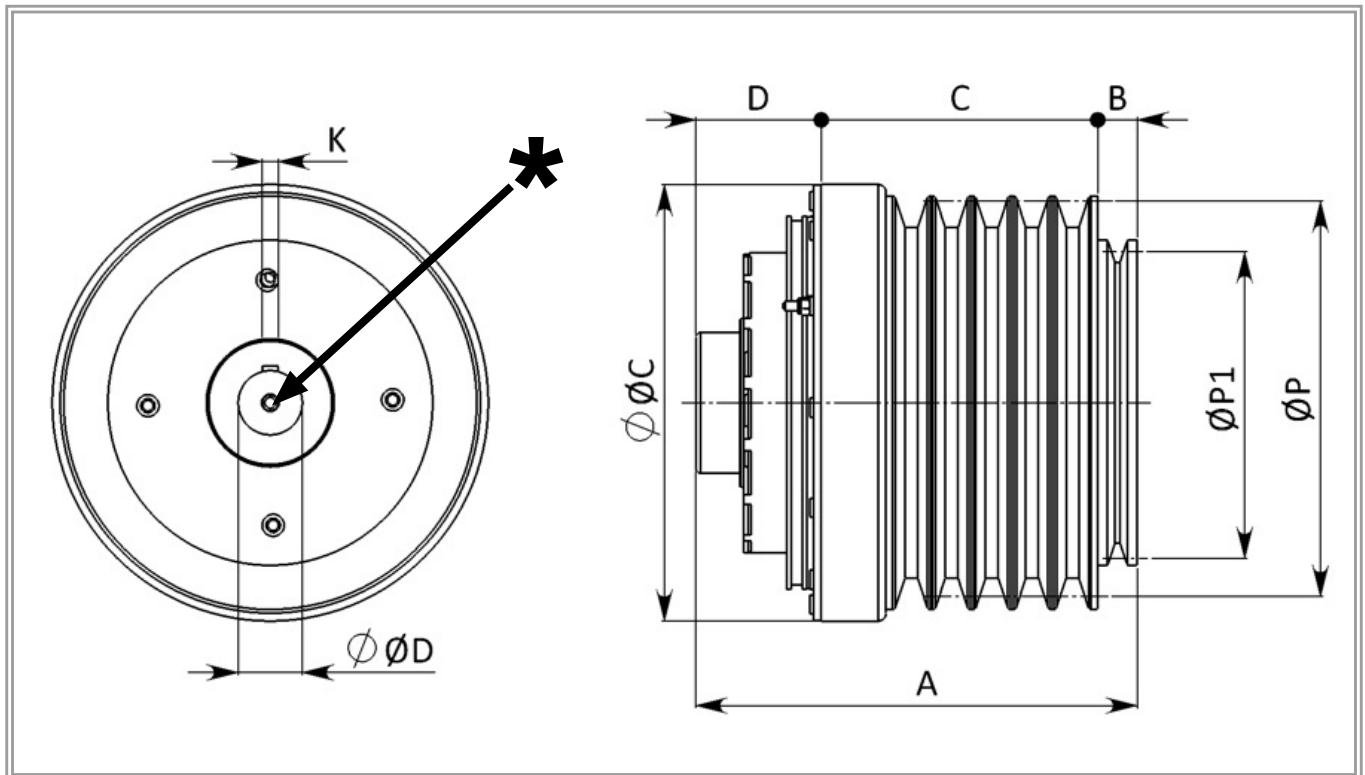
PULLEY WITH PNEUMATIC CLUTCH



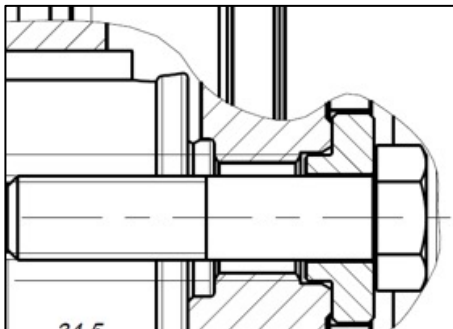
* Shaft Locking screw

- 6080200512 – M10**
- 6080200532 – M16**
- 6080200513 – M16**
- 6080200613 – M16**
- 6080200622 – M16**
- 6080200623 – M16**

Code	Description	A mm	B mm	C mm	D mm	K mm	ØD mm	ØC mm	ØP mm	Profilo	Gola n°	Peso Kg	Torque max N*m
6080200512	PULLEY WITH PNEUM CLUTCH BLW 140/P	197,5	0	81,5	70	10 P9	38 G7	238	160	SPB	3	21	600
6080200532	PULLEY WITH PNEUM CLUTCH BLW 210-270/P	227,5	30	81,5	70	14 P9	48 H7	238	160	SPB	3	21,1	600
6080200513	PULLEY WITH PNEUM CLUTCH BLW 300-400/P	229,5	21	92,5	70	16 JS9	55 G7	238	200	SPB	3	27,8	600
6080200613	PULLEY WITH PNEUM CLUTCH BLW 750/P	286,5	30,5	138,5	71,5	18 P9	60 G7	269	212	SPB	6	41,1	1000
6080200622	PULLEY WITH PNEUM CLUTCH BLW 185-270/PM	209	9,5	82	71,5	14 JS9	45 P7	238	280	SPB	4	32	600
6080200623	PULLEY WITH PNEUM CLUTCH BLW 300-400/PM	219,5	1	101	71,5	14 JS9	45 P7	269	280	SPB	5	48,1	600



ØP1= 200 SPA



* Vite serraggio puleggia/albero

- 6080200034 – M10**
- 6080200041 – M12**
- 6080200035 – M14**
- 6080200036 – M14**

Code	Description	A mm	B mm	C mm	D mm	K mm	ØD mm	ØC mm	ØP mm	Profile	Groove n°	Weight Kg	Torque max N*m
6080200034	PULLEY WITH PNEUM CLUTCH KPS 550-670	282	25	178	79	12	40 +0,1 +0,05	276	250	SPC	5	64	780
6080200041	PULLEY WITH PNEUM CLUTCH KTS-KTM 1200/1500	282	25	178	79	12	42 +0,1 +0,05	276	250	SPC	5	64	780
6080200035	PULLEY WITH PNEUM CLUTCH KTM 1800/2300	296	25	178	93	16	55 +0,1 +0,05	350	250	SPC	5	80	1600
6080200036	PULLEY WITH PNEUM CLUTCH WSM 2700/3300	296	25	178	93	18	60 +0,1 +0,05	350	315	SPC	5	100	1600

Pneumatic threaded connection 1/8" GAS (BSPP); Clutch simple acting pneumatic control. Air pressure 5,5÷6,5 bar / 80÷94PSI. Max operating temperature in continuous duty 80°C.



**Battioni®
Pagani**

Setting the pace since 1953



**Battioni®
Pagani**

**Via Ferrari N. 2
43058 Sorbolo Mezzani (PR) - Italy**

Ph. +39 0521 663203



**www.bapag.it
info@bapag.it**